



# Technical Specification



## 1600X Series Granulators

Tel (508) 399-6400 • Fax (508) 399-6653 • www.cumberland-plastics.com • Bulletin: CG2-516 • Effective: September 29, 2003 • Supersedes: New

## 1600X Series Granulators

### Application:

The 1600X Series Granulators are designed to reclaim injection molded, blow molded, or extruded scrap or film. They are ideal for scrap parts, sprues, runners, bottles, profiles, thin pipe, light purgings, and film/sheet (to 5/16" thick).

### Features:

Model	Throat Size	Cutting Circle Diameter	Throughput	Approximate Weight
1620X	16" x 20" (405 x 510 mm)	16.5" (419 mm)	800 lbs./hr. (363 kg.)	3,025 lbs. (1375 kg.)
1628X	16" x 28" (405 x 711 mm)	16.5" (419 mm)	900 lbs./hr. (545 kg.)	3,400 lbs. (1545 kg.)

### Benefits:

- Open slant cut rotor improves air flow for cool operation and efficient cutting. Ideal for bulky parts and low-density heat-sensitive materials.
- High inertia flywheel and rotor permit low rpm operation and reduced energy consumption.
- All interior surfaces are machined smooth for ease of cleaning.
- Double sealed bearings lubricated for life to minimize downtime.
- Integrated rotating end discs are included for low heat granulation and reduced frictional wear.
- NEMA 12 enclosures protect against moisture and dust contamination.
- Cumberland-manufactured knives are HCHC steel, specially heat treated with our proprietary process for exceptionally long life, so knife maintenance and replacement costs are minimized.
- Advanced design, front feed/conveyor feed, hinged hopper tilts out of the way for unobstructed access. Optional electric hopper opening.
- Machined solid steel cutting chamber & bed knife blocks, doweled and bolted endplates for maximum strength. Castings are not used.
- Adaptable bases allow left or right Airveyor discharge and easy field conversion.
- No tools are required to access swing-down screen cradle.
- Very large, open screen area lowers internal heat and reduces fines.
- Improved discharge allows granulate to funnel to the lowest portion of the chute, eliminating bridging and entrapment problems.
- Front position down-stroke bed knife for improved access.

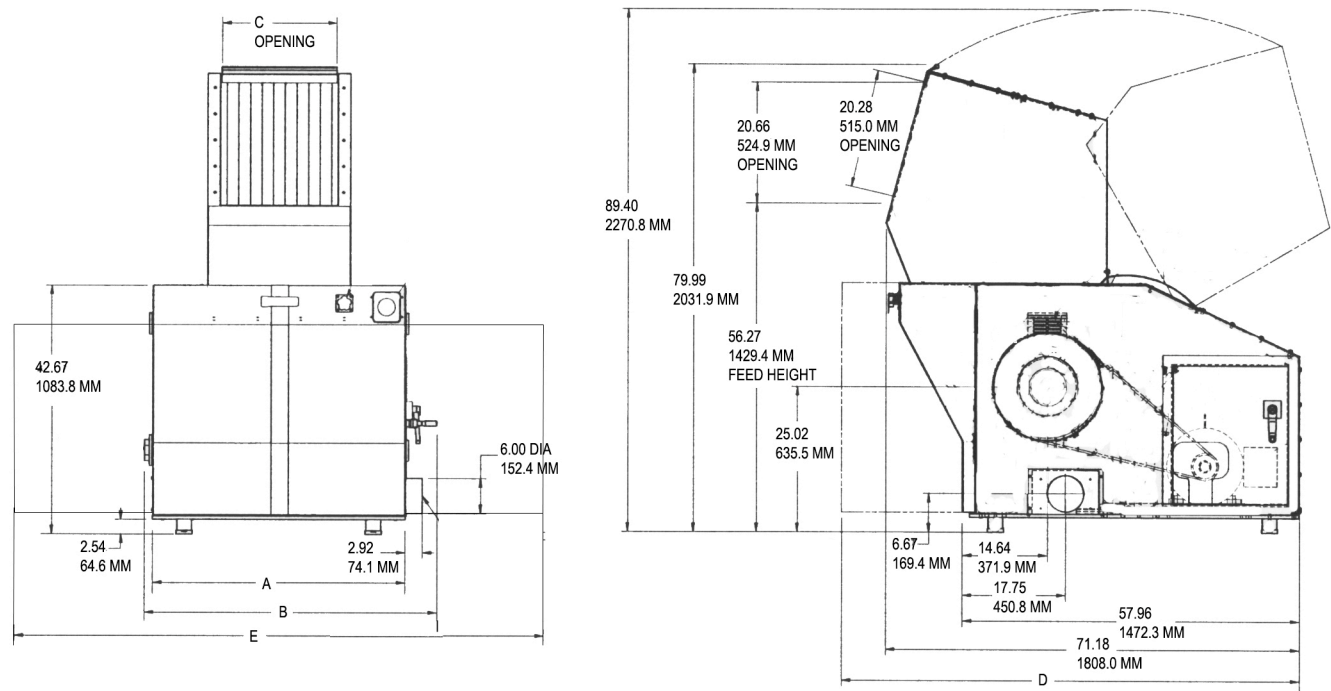
### Specifications:

	Standard	Standard Options
Infeed	Soundproofing tray feed/conveyor feed	Electric Jack Screw Opening Tray & sheet feed - 4" x 20" Tray & pipe feed - 6" feed roll - 16" with 3/4 HP
Cutting Chamber	Offset 2-bed knives, drop down cradle	Twinshear® (1620 and 1628)
Rotor	Open 3-knife slant cut, scooped	Twinshear® (1620 and 1628)
Rotor Knives	HCHC, landed	Keen Edge
Bed Knives	HCHC, 2-edge (reversible)	
Screen	5/16", swing down	3/16", 1/4", 3/8", and larger
Base	Modular with vibration pads	Casters
Discharge	6" Airveyor	5" Airveyor (1616 and 1620), Metal Bin (1620 and 1628)
Motor	20 HP, TEFC, 1800 rpm, 3/60/230/460	20 - 40 HP
Drive Parts	V-belt	V-belt (20, 25, 30, or 40 HP), Dual Flywheel
Electrical Components	NEMA 12 with Safety Interlocks	
Controls	230 or 460 volt, 115 volt, NEMA 12	Special voltages
Labels	Safety/caution/operation	French/Spanish
Accessories	Soundproofed to 85 dBA	Blower, Separator, Stand

□ See Page 2 For 1600X Series Drawing □



Cumberland 1600X Series Granulators



Dimensions

Model	A	B	C	D	E
1620X	43.44	51.25	20.00	78.25	69.25
1628X	51.44	59.25	28.00	82.25	77.25